



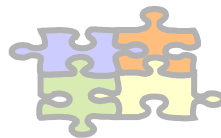
# Cosima Fleet Management - serve your clients better !

**cosima**  
*makes your business flow*

Cosima was established in 1990 offering a new generation of administrative software. Our goal is to focus on your real value chains as well as on the resources to administer these. Cosima Fleet is developed to increase the effectiveness of the sales process and give each client the information he/she requires.



## All customer focus on costs and cash !



Cosima Fleet can be extended with additional modules such as Financials, Orders and invoices, material management - all in an integrated total solution. Users find all customer information in windows which give a clear overview of all interactions and statuses, both current and historic. In addition, the contracts that your customers have with your company are shown, along with which value-chains are active.

Cosima has delivered some 100 client-solutions based on our unique template solutions. Our references is your guarantee.



**Cosima Fleet is the market's optimal Fleet solution for you and any SME business !**

### Fleet

**When the customer want extra service, you offer him directly to enter a fleet agreement. It's a cost efficient and time saving solution!**

### Challenge

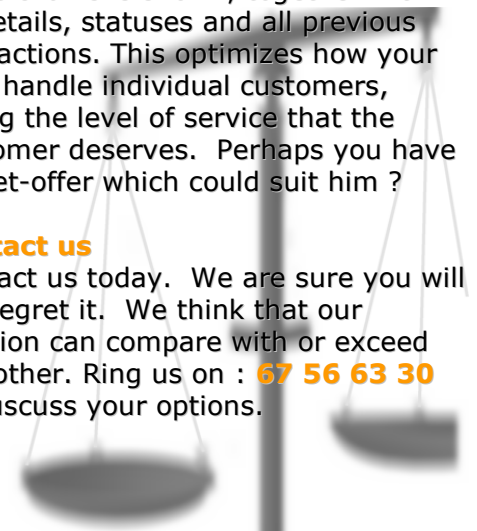
Most businesses have a lack of overview on their spending and location of equipment used in their daily activities. By entering into a fleet management solution costs are reduced and waste of time in maintenance and reparation is minimized. Is this customer good, bad, demanding or perhaps a priority customer? What are our possibilities with the customer in fleet ?

### Solution

Cosima Fleet for your specific branch gives you all information about the customer in one window. The customer's connections to all your value chains is shown, together with all details, statuses and all previous interactions. This optimizes how your staff handle individual customers, giving the level of service that the customer deserves. Perhaps you have a fleet-offer which could suit him ?

### Contact us

Contact us today. We are sure you will not regret it. We think that our solution can compare with or exceed any other. Ring us on : **67 56 63 30** to discuss your options.





## Why Cosima Fleet ?

Since the first versions of IT-systems there has been a need for changes, expansion and improvements. It has often been expensive, complex and time consuming, to adapt the many subsequent errors and failings. Now, the available EDB-technology makes it possible to realise the changes, expansion and improvements and at the same time ensure the desired quality and productivity !

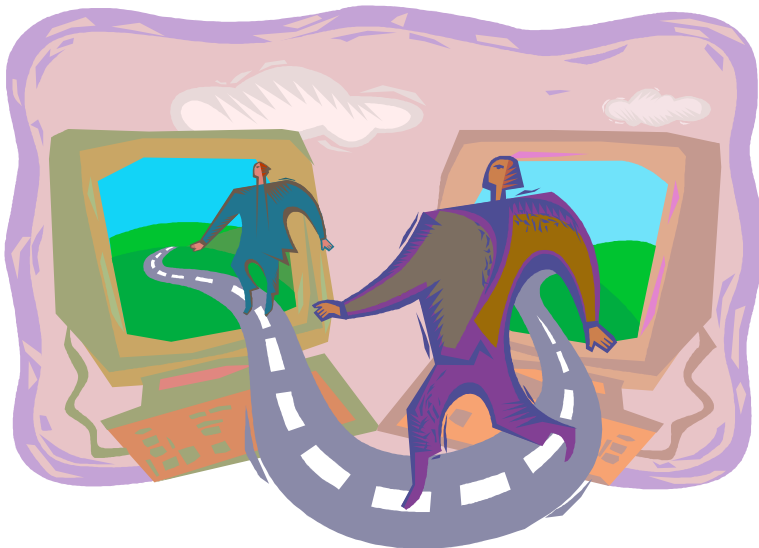
Cosima Fleet is optimised for businesses with their own needs and requirements for their EDB-systems. At the same time, the adaptation of Cosima Fleet is done together with users who themselves will learn the system and its possibilities.

A user is important in the adaptation process, testing process and in the initial use of the system. Cosima assists in all phases of producing your completed system.

Chose, yourself, or combine :

\* **Interface:** Windows x or internet

\* **Database:** SQL Server, Sybase, Oracle, Informix, DB2, ODBC etc



## Based on open IT standards !

Choose your technology :

\* Windows-version and/or Internet

\* **Database:** SQL Server, Sybase, Oracle, Informix, DB2, ODBC ...

## What is an Template ?

Our clients have experienced how important an administration system is. They have felt the need for small and more comprehensive system changes, but have been locked in to their system. A template is 70-90% complete in regard to its matching a client's demands. With our extremely effective tools, which are based on Microsoft standards, modifications can be made in minutes, where it would have normally taken days or weeks.

Cosima Fleet is a part of a total package which gives you many possibilities.

## Cosima Fleet characteristics:

- With focus on all your sales processes !
- ◆ Free defining of product structures
- ◆ Full control of all resources
- ◆ Contract / project products support
- ◆ Integrate Purchase A/c / G/L
- ◆ Searching on all fields and windows
- ◆ Built-in reporting/batch
- ◆ OLE/2 support  
(integration with 3rd party products)
- ◆ Own choice server/dialog/SQL-db

## Cosima SME/ERP/Template :

- Choose a total solution when it suits:  
(Trade, Industry, Insurance, Member)
- ◆ *Cosima Financials* (accounts)
- ◆ *Cosima Salary* (Salary & personnel)
- ◆ *Cosima OLFI* (Material and stock)
- ◆ *Cosima MPS* (Production Management)
- ◆ *Cosima WebPortal* (Internet access)
- ◆ *Cosima Analyse* (Graphical analyses)

